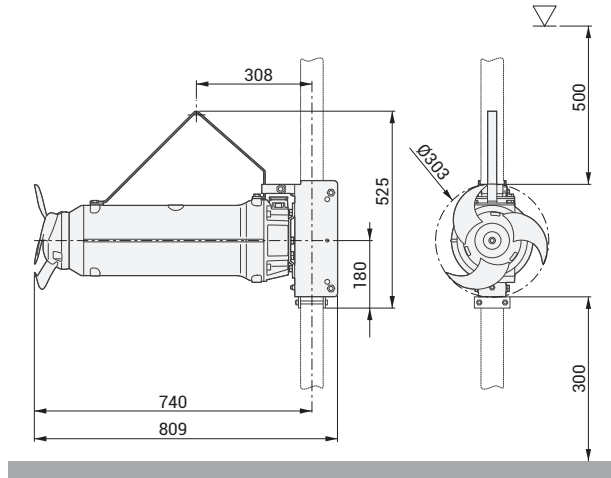




ZMD 030E A 3.2/6 AG 010



79 Kg (stand and guiding system excluded)

Product

Type	MIXER
Name	ZMD 030E A 3.2/6 AG 010
Configured Standard	-
ATEX marking	Optional (from DECEMBER 2019)

Motor

Rated Voltage	400 V
Frequency	50 Hz
Motor phases	3
Number of poles	6
Incoming power P2	3.2 kW
Electric power P1	3.7 kW
Rated current	7.1 A
rpm	957 rpm
Efficiency	85.9%
Cos φ	0.757
Rated torque	31.9 Nm
Start	DOL
Starting current	37.6 A
Starting torque	45.0 Nm
Degree of protection	IP 68
Insulation class	H
Motor efficiency class ref.	IE3

Gear unit

Type	-
Gear ratio	1

Propeller

Name	030E
Rated diameter	300 mm
Number of blades	3
rpm	957 rpm
Pp2	2.99 kW
Propeller thrust	820 N
Jet ring	Optional

Cable

Type	4G1.5 + 3x1
Length	10 m

Monitoring

Thermal protector	klixon
Leakage sensor	1 in mechanical seals chamber

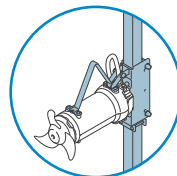
Operating limits

Ambient temperature	0 ÷ 60°C
Max. density treated liquid	1100 Kg/m ³
pH treated liquid	6-14
Max. start per hour	20 /h (equally distributed)
Max. acoustic pressure level	Max 70 dB (A)
Operating mode	S1 – Continuous use

Construction materials

Case	Cast iron EN-GJL-250
Gear box	-
Propeller	AISI 316 (optional AISI 329)
Jet ring	-
Shaft	AISI 431
Mechanical seal (motor side)	Silicon carbide
Mechanical seal (propeller side)	Silicon carbide
Painting	Bi-epoxy 200 µm (optional 400 µm)
Screws	Stainless steel A2-70 (optional A4)
Gaskets	NBR
Fixing system	AISI 304 stainless steel (optional AISI 316)

Installation



STANDARD

standard	60 x 60
optional	50 x 50
	80 x 80
	100 x 100